

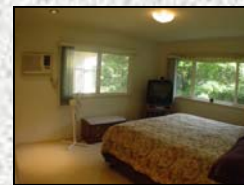
JUST LISTED IN KAILUA



Elegance

605 Hanale Place.
Offered at
\$749,900 (FS)

- BEDROOMS: 3
- BATHS: 2
- LIVING AREA:
OVER 1500 (SQ FT)
- LAND: 6409 (SQ FT)
- BUILT 2002
- DOUBLE WALL INSULATION
- DUAL PANE WINDOWS
- PEACEFUL 2ND STORY LANAI
- STEEL FRAME CONSTRUCTION
- CATHEDRAL CEILINGS
- MODERN RECESSED LIGHTING
- MATURE MANICURED LANDSCAPE
- MASTER SUITE / PRIVATE LEVEL
- LARGE BEDROOMS W/ WALK-IN
CLOSETS AND AIR-CONDITIONED
- 2 CAR GARAGE
- LOTS OF STORAGE SPACE
- TROPICAL CREEK SIDE SETTING
- QUIET CUL-DE-SAC
- PERMITTED FOR EXPANSION
- KAWAINUI VISTA SUBDIVISION
- GREAT NEIGHBORHOOD
- SHINES LIKE BRAND NEW
- TMK: (1) 3-5-074-044
- MLS # 2501985



Call us today for a showing, this one
won't last long...



Jamie Cho (RA) and Brad Nelson (RA) RE/MAX in Paradise (808) 237-2434
Www.ParadiseDreamHomes.com
jkayhawaii@hawaii.rr.com or brad.nelson@remax.net